

## DX1001TGB - ATEX - Oljerenseunit

### Elektrisk drevet oljekondisjoneringsenhet ATEX

Denne modellen er spesielt laget for bruk i eksplosjonsfarlig sone. ATEX klasse:

EX class: II 2G Ex h IIC T4 (+1 °C < Ta < +40 °C)

Enheten er produsert i SS316 stål. Motor og pumpe kan leveres med NORSOK overflatebehandling på forespørsel.

Et nytt modulært filterhus arrangement gir fleksible og plassbevisste løsninger for å integrere DXO patron-element til både nye og eksisterende system. Vi kan supplere fra 1 opp til 12 patron-element som en unit i et kompakt og plassbesparende oppsett. Dette gjør rensesystemet skalertbart fra smått til stort

Den elektriske oljekondisjoneringsuniten kan utstyres med en rekke standard alternativer som gir en effektiv behandlingspakke. Kan tilpasses de fleste oljesystemer. Løsningen er modul og fleksibel for å tillate kundespesifikke løsninger og krav.

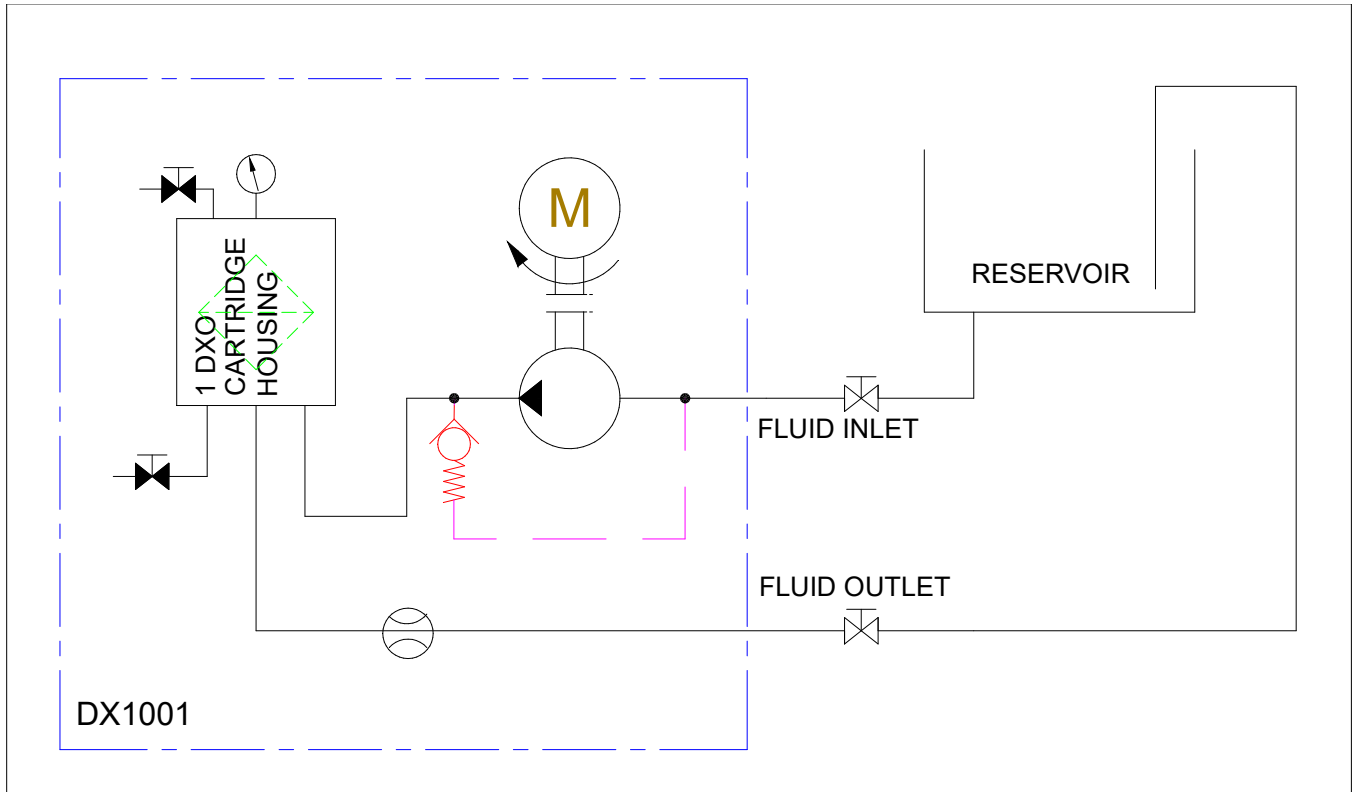




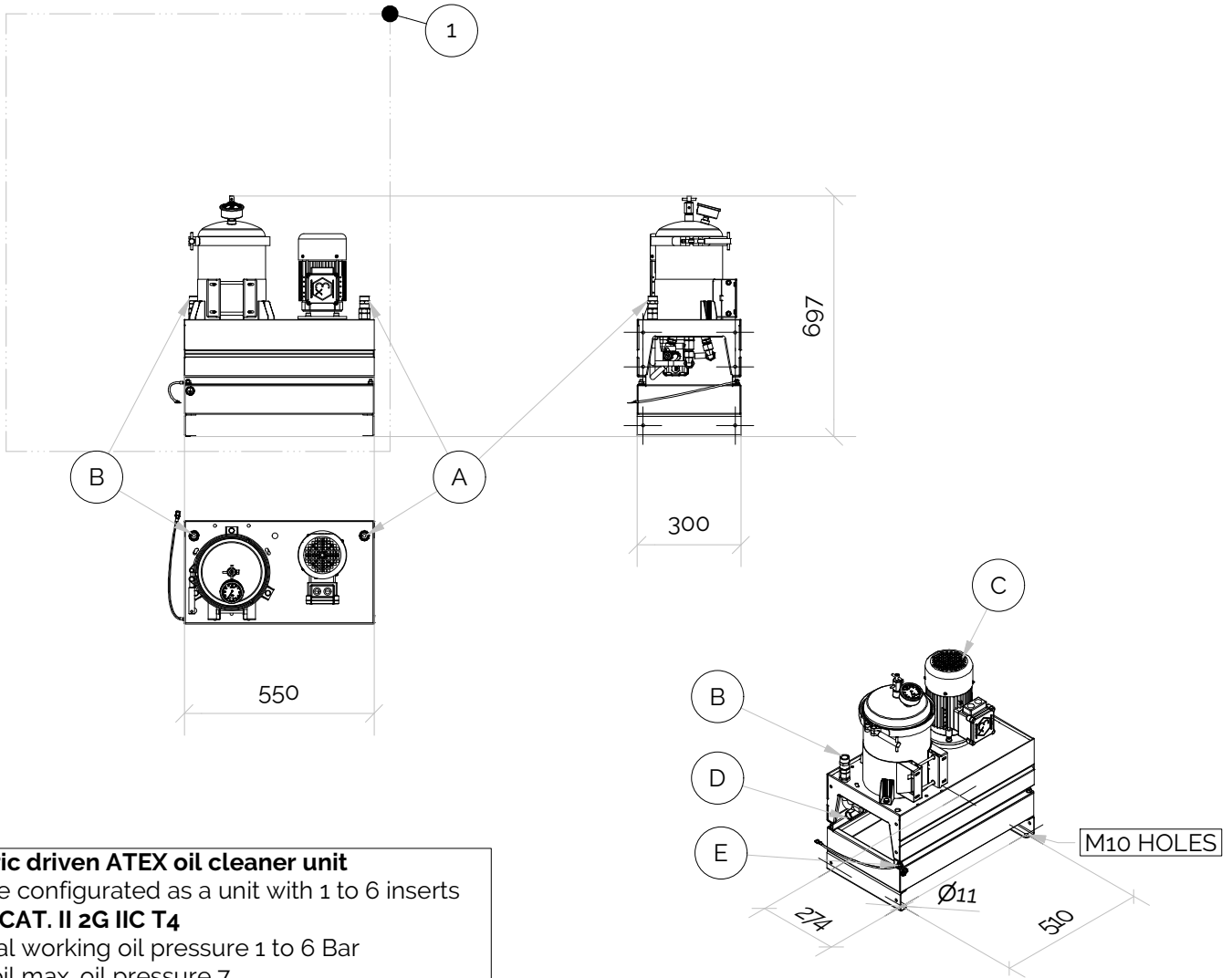
Unit EX Class	EX class: II 2G Ex h IIC T4 (+1 °C < Ta < +40 °C)
Max. Pressure [Barg]	Fluid Pressure 7 barg max /Air supply 7 Barg max
Pump & Connection Ports	Fluid cleaning side: 3/8"BSP In & Out.
Sight Glass	No
Hydraulic Oil Volume Capacity	3000 litre@ 32cSt
Typical Flow	1 Lpm @ ISOVG32
Purify Properties	Particles 0,1 Micron, Varnish, Bacterias, Water
Weight [Kgs]	35
Measure [mm]	H 697 x D 300 x L 550
Material [non vetted parts]	SS316
DXO Cartridge	x1

**Europafilter Norge AS,**  
Liavegen 33,  
5705 Voss  
tel: +47 55 160 160  
mob: +47 97198644  
email: post@europafilter.no

### Schematic view of the electrical driven unit



# Electric powered oil cleaner unit



## Electric driven ATEX oil cleaner unit

Can be configured as a unit with 1 to 6 inserts

### ATEX CAT. II 2G IIC T4

Normal working oil pressure 1 to 6 Bar

Max. oil max. oil pressure 7

### Removes;

- \* Varnish & mitigates varnish in system
- \* Particles, abrasives & wear
- \* Moisture, water & salts
- \* Bacterias (No chemicals)

Flow is cSt dependent of fluid, cleanliness level.

Typical flow 1 lpm per insert @ ISOVG32

©2019, 2020 Delta-Xero All Rights Reserved

## PARTS LIST

ITEM	QTY	PART NUMBER	DESCRIPTION	MATERIAL
1	1	DX1001TGB-NNNNN12N	SINGLE ELECTRIC ATEX UNIT	SS316L
2	1	DX1002TGB-NNNNN12N	DOUBLE ELECTRIC ATEX UNIT	SS316L
3	1	DX1003TGB-NNNNN12N	TRIPLE ELECTRIC ATEX UNIT	SS316L
4	1	DX1004TGB-NNNNN12N	QUATRO ELECTRIC ATEX UNIT	SS316L
6	1	DX1006TGB-NNNNN12N	SIX DOUBLE ELECTRIC ATEX UNIT	SS316L
A	1		FLUID SUCTION INLET PORT TO PUMP, G1/2"	
B	1		FLUID RETURN DISCHARGE PORT TO OIL RESERVOIR, G1/2"	
C	1		ATEX ELECTRIC MOTOR, 230 VAC	
D	1		DRAIN BALL VALVE G3/8" OR G1/2"	
E	1		EARTH/GROUNDING POINT	

Designed by

ME

Checked by

Approved by

Date

Date

09.01.2020