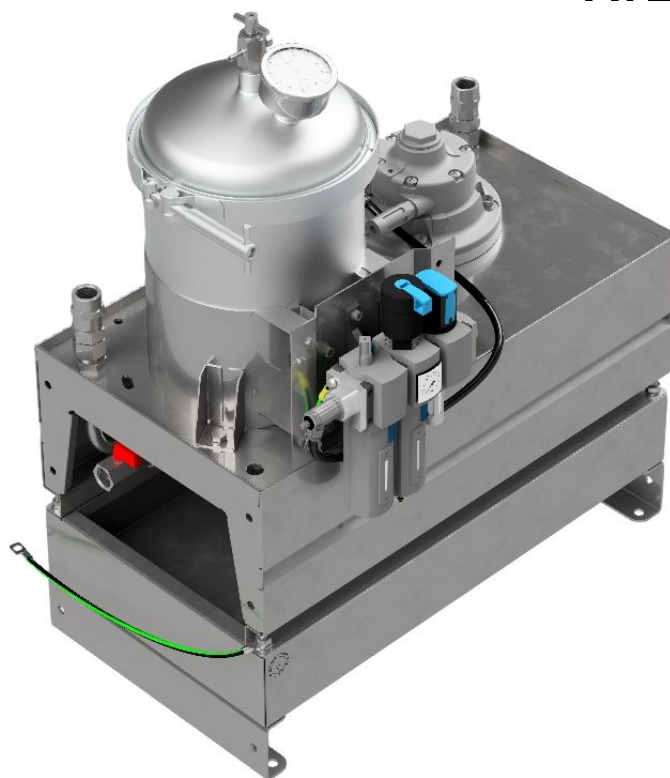


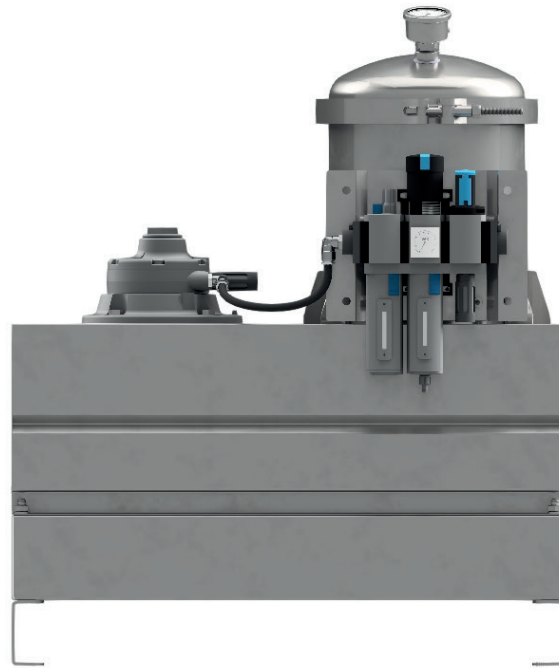
DX1001TP - Luftdrevet Oljerenseunit

Pneumatisk drevet oljekondisjoneringsenhet

Et nytt modulært filterhus arrangement gir fleksible og plassbevisste løsninger for å integrere DXO patron-element til både nye og eksisterende system. Vi kan supplere fra 1 opp til 12 patron-element som en unit i et kompakt og plassbesparende oppsett. Dette gjør rense-systemet skalertbart fra smått til stort

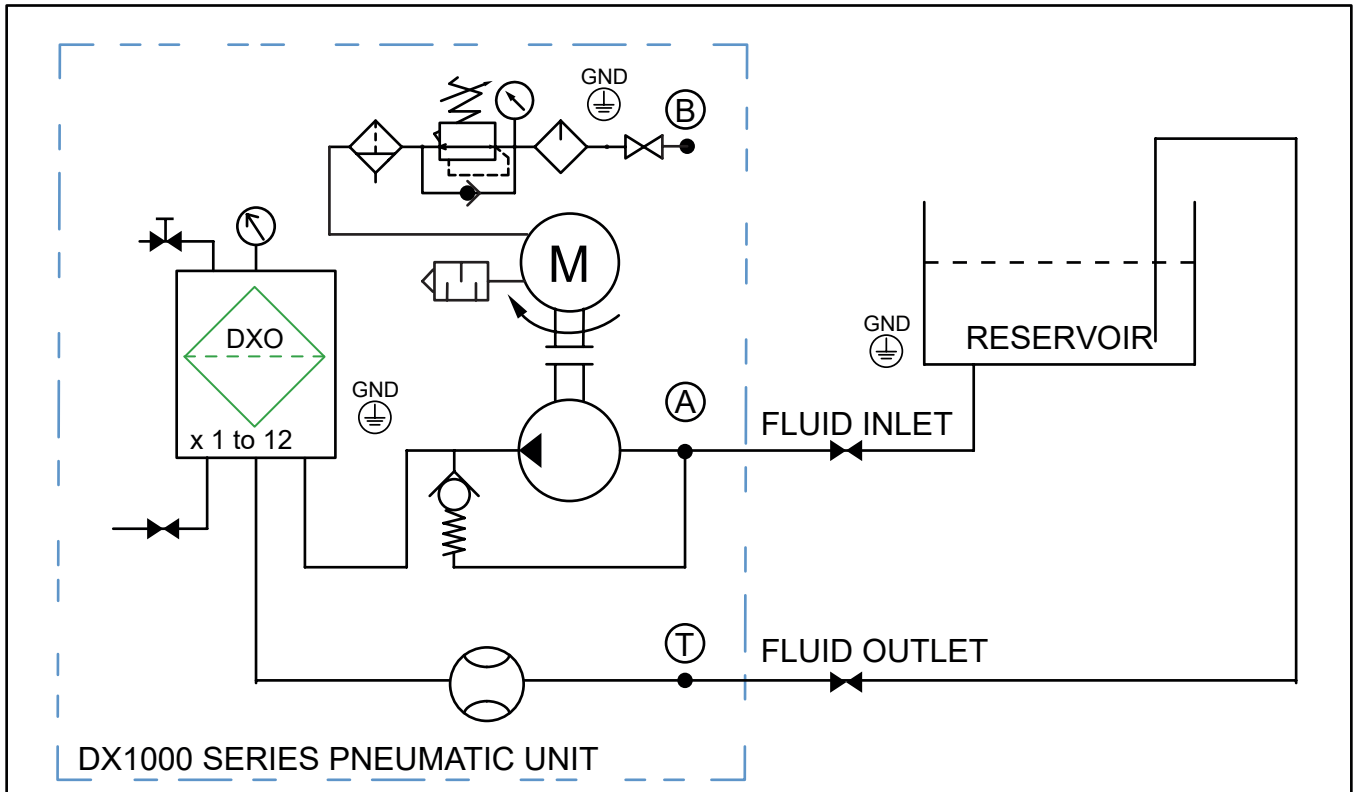
Den luftdrevne oljekondisjoneringsuniten kan utstyres med en rekke standard alternativer-som gir en effektiv behandlingspakke. Kan tilpasses de fleste oljesystemer. Løsningen er modul og fleksibel for å tillate kundespesifikke løsninger og krav. Vi har nå roterende luftdrevne motor med pumpe på våre uniter noe som forbedrer levetid.

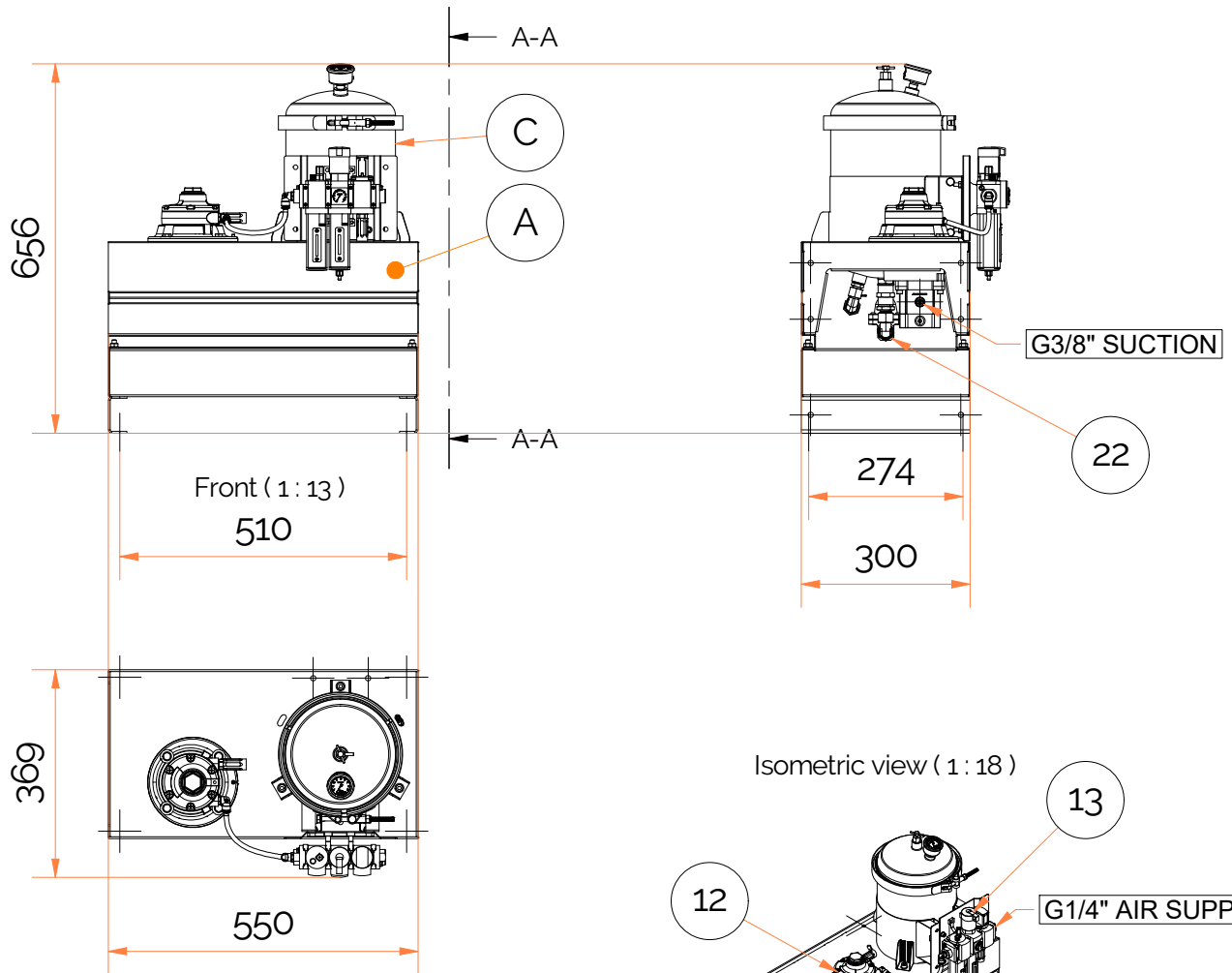




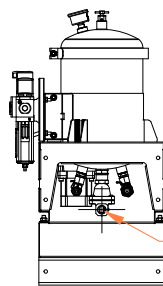
Unit ATEX Class	EX class: II 2G Ex h IIC T4 (+1 °C < Ta < +40 °C)
Air Motor	Pneumatic driven vane motor, EX class: II 2 GDc T4 (+10 °C < Ta < +40 °C)
Max. Pressure [Barg]	Fluid Pressure 7 barg max /Air supply 7 Barg max
Pump & Connection Ports	Fluid cleaning side: 3/8"BSP In & Out. Air Regulator, drive supply: G1/4"BSP
Sight Glass	Yes
Hydraulic Oil Volume Capacity	3000 litre@ 32cSt
Typical Flow	1 Lpm @ ISOVG32
Purify Properties	Particles 0,1 Micron, Varnish, Bacterias, Water
Weight [Kgs]	22
Measure [mm]	H 656 x D 369 x L 550
Material [non vetted parts]	SS316
DXO Cartridge	x1

Schematic view of the pneumatic driven unit





A-A (1 : 18)



DX1000 Series, Single oil cleaner

Normal working oil pressure 0.8 to 6 bar
 Max. Oil pressure 7 Barg
 Design pressure 14 Barg

Removes:

- Particles to 0.1 micron
- Water
- Oxidation bi-products (Sludge & resin)
- Mitigates varnish deposits

PARTS LIST

ITEM	QTY	PART NUMBER	DESCRIPTION	MATERIAL
1	1	T	DX1000 SERIES, MODULE BASED EXTENSION ASSEMBLY FOR SINGLE DOUBLE & TRIPLE STACKED INSERTS	SS316L
A	1	DX1001TP-NVNNN11P	SINGLE INSERT AIRDRIVEN OIL CLEANER, 0,1 MIC.	SS316L
B	1	PG10SS	10 BAR PRESSURE GAUGE	SS316L
C	1	DX1001	SINGLE FILTERHOUSING FOR STACKABLE CARTRIDGE ELEMENTS. MAX. PRESSURE, 7 BARG. DESIGN PRESSURE 14 BARG.	SS316L
12	1	2AM-ARVg2	Air driven vane motor & pump, Area Class: II 2 GDc +1 C Ta +40	Fe Painted
13	1	531029	Air regulator for vane motor, MSB4-AGB_C4_J11_M2-WP-EX4-Z. Ex rated with lubricator, shut off valve	Several
22	1	VIS-BSP	DISCHARGE FORM FILTERUNIT, FLOW INDICATOR G3/8" BSPF ALTERNATIVE G1/2"	SS316

Designed by ME	Checked by	Approved by	Date	Date 11.04.2019
--------------------------	------------	-------------	------	---------------------------



AIR DRIVEN SINGLE OIL CLEANER

DX1001TP PNEUMATIC DRIVEN OIL CLEANER
 UNITDX1001TP-NVNNN11P

Edition
A2019

Sheet
1 / 1