

DX1001TP - Luftdrevet Oljereenseunit

Pneumatisk drevet oljekondisjoneringsenhet

Et nytt modulært filterhus arrangement gir fleksible og plassbevisste løsninger for å integrere DXO patron-element til både nye og eksisterende system. Vi kan supplere fra 1 opp til 12 patron-element som en unit i et kompakt og plassbesparende oppsett. Dette gjør rensesystemet skalertbart fra smått til stort

Den luftdrevne oljekondisjoneringsuniten kan utstyres med en rekke standard alternativer-som gir en effektiv behandlingspakke. Kan tilpasses de fleste oljesystemer. Løsningen er modul og fleksibel for å tillate kundespesifikke løsninger og krav. Vi har nå roterende luftdrevet motor med pumpe på våre uniter noe som forbedrer levetid.

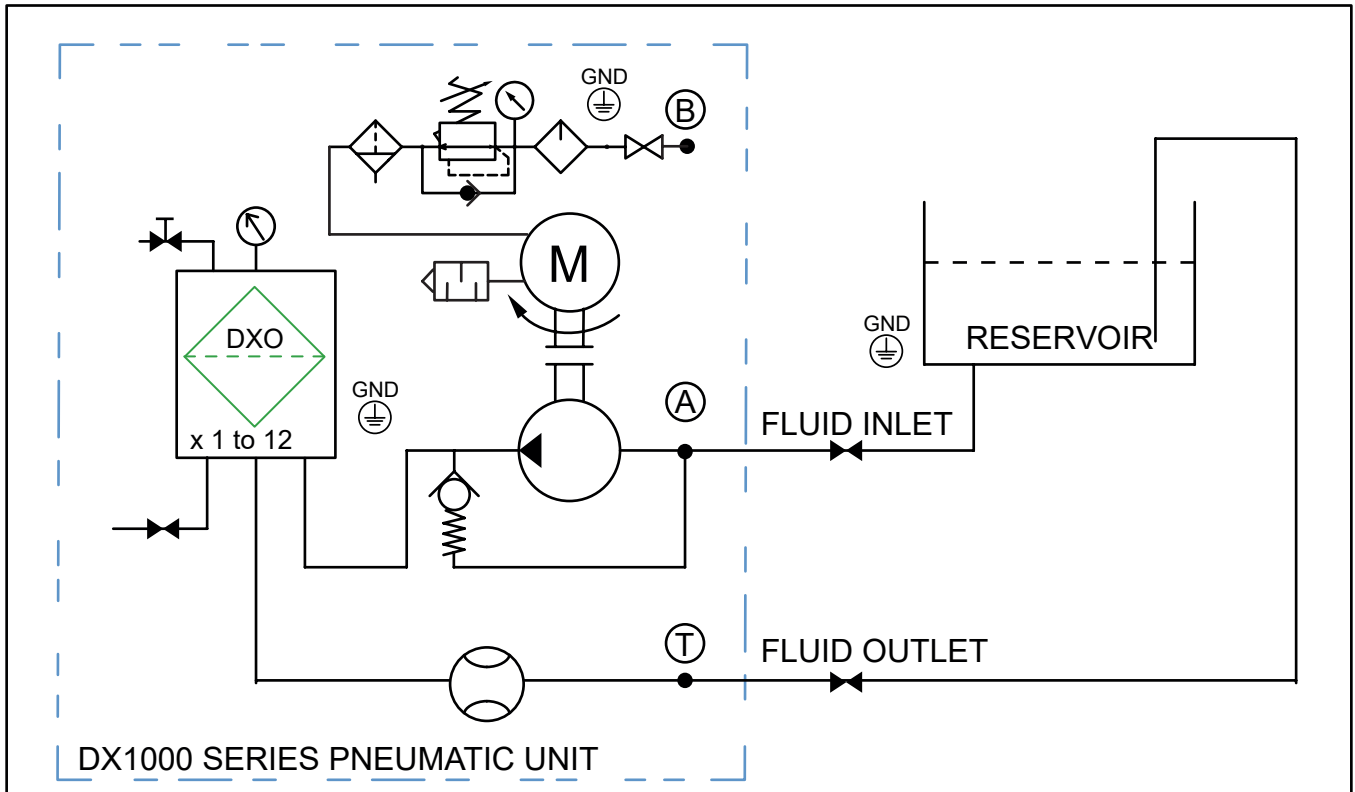




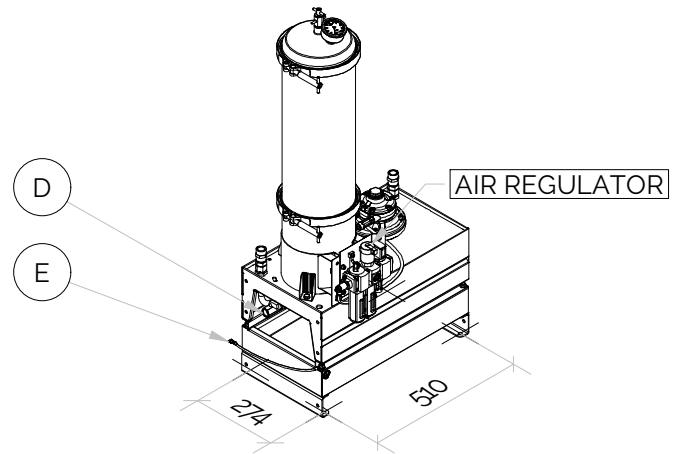
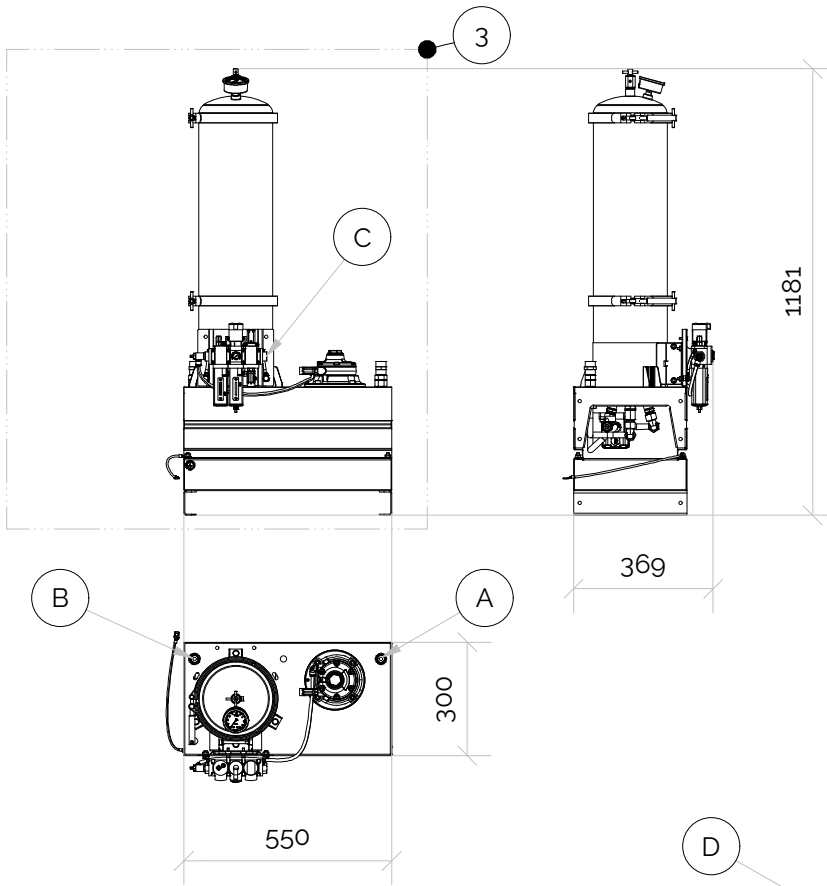
Unit ATEX Class	EX class: II 2G Ex h IIC T4 (+1 °C < Ta < +40 °C)
Air Motor	Pneumatic driven vane motor, EX class: II 2 GDc T4 (+10 °C < Ta < +40 °C)
Max. Pressure [Barg]	Fluid Pressure 7 barg max /Air supply 7 Barg max
Pump & Connection Ports	Fluid cleaning side: 3/8"BSP In & Out. Air Regulator, drive supply: G1/4"BSP
Sight Glass	Yes
Hydraulic Oil Volume Capacity	9000 litre@ 32cSt
Typical Flow	3 Lpm @ ISOVG32
Purify Properties	Particles 0,1 Micron, Varnish, Bacterias, Water
Weight [Kgs]	32
Measure [mm]	H 1181 x D 369 x L 550
Material [non vetted parts]	SS316
DXO Cartridge	x3

Europafilter Norge AS,
Liavegen 33,
5705 Voss
tel: +47 55 160 160
mob: +47 97198644
email: post@europafilter.no

Schematic view of the pneumatic driven unit



Air powered oil cleaner unit



Air driven oil cleaner unit

Can be configured as a unit with 1 to 6 inserts
ATEX CAT. II 2G Ex h IIC T4 Gb Tamb +1°C to 40°C
 Normal working oil pressure 0.1 to 6 Bar
 Max. oil max. oil pressure 7

Removes;

- * Varnish & mitigates varnish in system
- * Particles, abrasives & wear
- * Moisture, water & salts
- * Bacterias (No chemicals)

Flow is cSt dependent of fluid, cleanliness level.
 Typical flow 1 lpm per insert @ ISOVG32

©2019, 2020 Delta-Xero All Rights Reserved

PARTS LIST

ITEM	QTY	PART NUMBER	DESCRIPTION	MATERIAL
1	1	DX1001TGP-NNNNN12P	SINGLE AIR POWERED OIL CLEANER UNIT	SS316L
2	1	DX1002TGP-NNNNN12P	DOUBLE AIR POWERED OIL CLEANER UNIT	SS316L
3	1	DX1003TGP-NNNNN12P	TRIPLE AIR POWERED OIL CLEANER UNIT	SS316L
4	1	DX1004TGP-NNNNN12P	FOUR DOUBLE AIR POWERED OIL CLEANER UNIT	SS316L
6	1	DX1006TGP-NNNNN12P	SIX DOUBLE AIR POWERED OIL CLEANER UNIT	SS316L
A	1		FLUID SUCTION INLET PORT TO PUMP, G1/2"	SS316L
B	1		FLUID RETURN DISCHARGE PORT TO OIL RESERVOIR, G1/2"	SS316L
C	1		AIR SUPPLY TO MOTOR, G1/4"	SS316L
D	1		DRAIN BALL VALVE G3/8" OR G1/2"	SS316L
E	1		EARTH GROUNDING	Cu

Designed by ME	Checked by	Approved by	Date	Date 09.01.2020
-------------------	------------	-------------	------	--------------------

DELTA-XERO THE FUTURE IS SYSTEM RELIABILITY	TRIPLE AIR POWERED OIL CLEANER UNIT		
	DX1003TGP-NNNNN12P	Edition A2019	Sheet 1 / 1