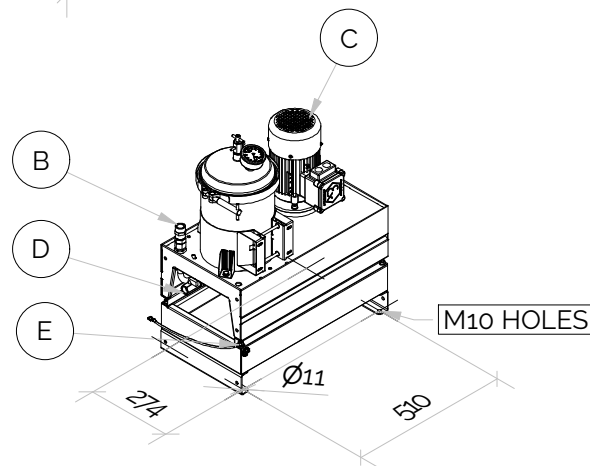
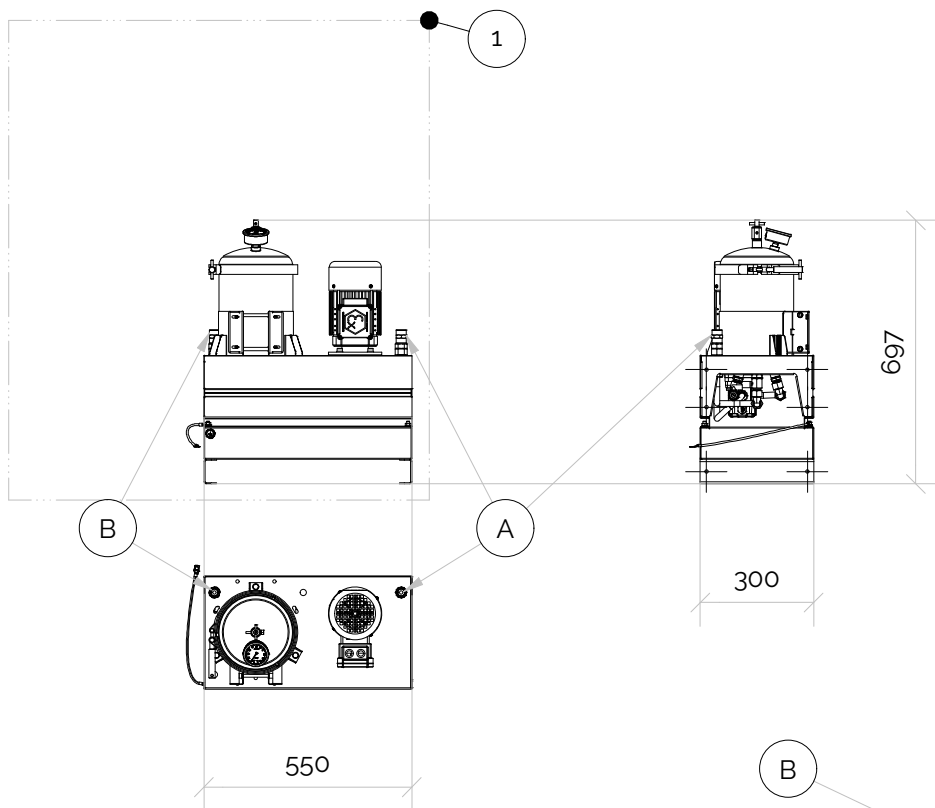


Electric powered oil cleaner unit



Electric driven ATEX oil cleaner unit

Can be configured as a unit with 1 to 6 inserts

ATEX CAT. II 2G IIC T4

Normal working oil pressure 1 to 6 Bar

Max. oil max. oil pressure 7

Removes;

- * Varnish & mitigates varnish in system
- * Particles, abrasives & wear
- * Moisture, water & salts
- * Bacterias (No chemicals)

Flow is cSt dependent of fluid, cleanliness level.

Typical flow 1 lpm per insert @ ISOVG32

©2019, 2020 Delta-Xero All Rights Reserved

PARTS LIST

ITEM	QTY	PART NUMBER	DESCRIPTION	MATERIAL
1	1	DX1001TGB-NNNNN12N	SINGLE ELECTRIC ATEX UNIT	SS316L
2	1	DX1002TGB-NNNNN12N	DOUBLE ELECTRIC ATEX UNIT	SS316L
3	1	DX1003TGB-NNNNN12N	TRIPLE ELECTRIC ATEX UNIT	SS316L
4	1	DX1004TGB-NNNNN12N	QUATRO ELECTRIC ATEX UNIT	SS316L
6	1	DX1006TGB-NNNNN12N	SIX DOUBLE ELECTRIC ATEX UNIT	SS316L
A	1		FLUID SUCTION INLET PORT TO PUMP, G1/2"	
B	1		FLUID RETURN DISCHARGE PORT TO OIL RESERVOIR, G1/2"	
C	1		ATEX ELECTRIC MOTOR, 230 VAC	
D	1		DRAIN BALL VALVE G3/8" OR G1/2"	
E	1		EARTH/GROUNDING POINT	

Designed by

ME

Checked by

Approved by

Date

Date

09.01.2020



SINGLE ELECTRIC POWERED OIL CLEANER

DX1001TGB-NNNNN12N

Edition
A2019

Sheet
1 / 1